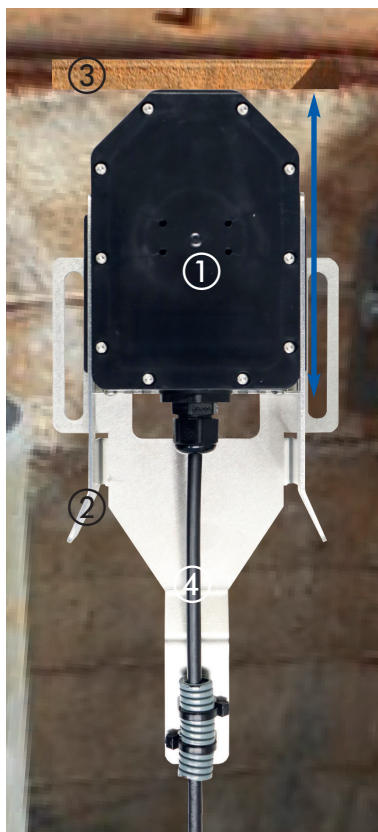


Product Information

CoverSensor with electrical switch for structural health monitoring

The LANCIER **CoverSensor** has been specially developed for the monitoring of manhole covers and other building openings. Its self-contained design and the materials used have been engineered for use in harsh environments, such as those found in manhole structures. Without external function-determining elements, it is particularly insensitive to manipulation, corrosion and wear.



The **CoverSensor** ① is mounted on a slide ② under spring tension. It is screwed firmly to a manhole wall, for example, so that it touches the manhole cover ③ at a ferromagnetic point. The spring-loaded slide is pretensioned to compensate for tilting movements of the manhole cover. Mounting on doors and other building openings is similar.

For monitoring, an internal dry contact is read out by means of a two-wire measuring cable ④.

When the manhole cover/door is opened, the switching state of the changeover contact changes, whereby the affected building opening is detected and reported by the LANCIER monitoring system.

The alarm is triggered decentrally via relay outputs or via Modbus to a remote control system or via IP network to the LANCIER Monitoring UMS system.

Black box principle

The sensor has no moving external function determining elements and is therefore insensitive to manipulation, corrosion and wear.

Technical Data

Connection cable length	5 m, others on request
Signal output contact	dry changeover contact
Housing material	impact resistant polyethylene
Housing protection class	IP 68
Operating temperature	-20 ... +75 °C
Housing dimensions	160 x 90 x 40 mm (H x W x D)

Ordering Data

CoverSensor with electrical switch for building monitoring	Order-no. 075694.010
Monitoring units	
RM-Basic	
Supply, communication and display module for the RM-Bus	Order-no. 074001.100
RM-Loop	
Loop resistance measuring module, 2-channels	Order-no. 074008.000

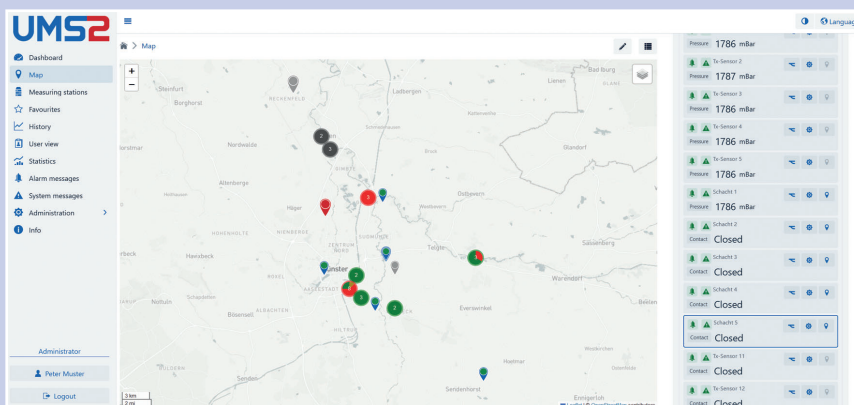
Product Information

CoverSensor with electrical switch

for structural health monitoring

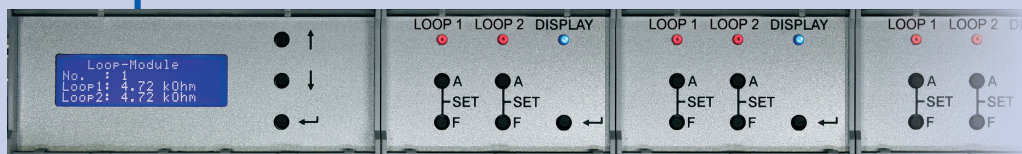
LANCIER Monitoring GmbH
Gustav-Stresemann-Weg 11
48155 Münster, Germany
Tel. +49 (0) 251 674 999-0
Fax +49 (0) 251 674 999-99
mail@lancier-monitoring.de
www.lancier-monitoring.de

System diagram



Evaluation of the measurement data and alarm report with visualisation of its geographical position in the LANCIER Monitoring UMS platform.

IP network via Ethernet, RS485 or GPRS



Monitoring station with measuring module RM-Loop

Measurement loops

