

# Product Information

## RM-Mx

**Interface module** to integrate M-bus nodes into the Rail-Module-Bus

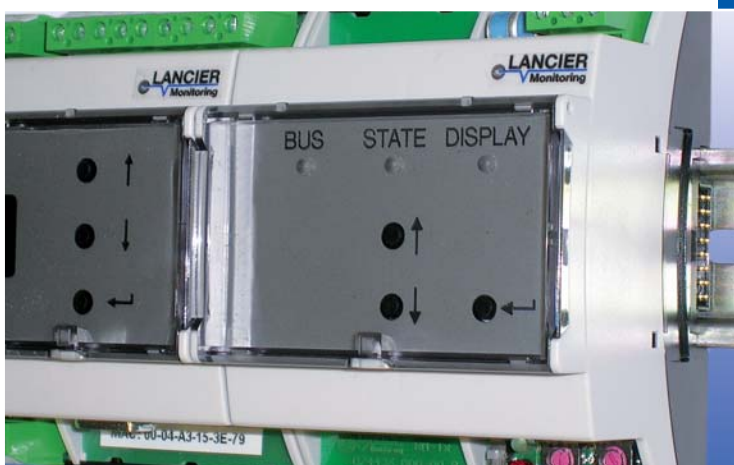
The LANCIER Monitoring Rail-Module-Bus is a modular and robust sensor system.

Several measuring modules are mounted on a DIN rail and are directly connected to one another by means of plug-in contacts. The supply voltage, data analysis and control panel as well as their transmission to the remote measuring stations are carried out via the RM-Basic module.

The RM-Mx interface module integrates M-bus nodes into the RM-Module-Bus system, e.g. for reading of electric or power meters. The operating range might cover up to 10 km depending on the quality of the used copper monitoring pair.

The sensor's thresholds are set at the server by the connected monitoring system.

An individually startable real-time measurement can be used for fault diagnostics.



## Technical Data

Number of measuring channels	1 for 4 M-Bus nodes
Measuring voltage	40 V DC typ., galvanically isolated
Bus type	M-Bus
Transfer rate	2400 Baud
Current limiting typ.	45 mA
Input sensitivity	≥ 35 dB typ. (600 Ω)
Supply voltage	12 V / 5 V DC by RM-Basic module 20 .. 72 V CD by connection terminals
Power consumption	max. 8 VA
Input measuring line pulse strength	1.2/50 μs 1000 V
Operating temperature range	-20 °C .. +65 °C
Storage temperature range	-40 °C .. +70 °C
Admissible ambient humidity	0 .. 95 % rel. humidity, non-condensing
Display	Monochrome LC-Display by RM-Basic module
Signal LEDs per measuring channel	
BUS green / red	red: Signals pending green: Measuring channel activated
STATE green / red	red: Measuring interval green: Operation
DISPLAY blue	Display operation
Dimensions RM-Mx (W x H x D)	72 x 89 x 65 mm

## Ordering Data

### RM-Mx

Interface module to integrate M-bus nodes into the Rail-Module-Bus

**Order-No. 074701.000**

### RM-Basic

Power supply, communication and display module for the RM-Bus

**Order-No. 074001.100**

# Product Information

## RM-Mx

Interface module to integrate M-bus nodes into the Rail-Module-Bus

LANCIER Monitoring GmbH  
Gustav-Stresemann-Weg 11  
48155 Münster, Germany  
Tel. +49 (0) 251 674 999-0  
Fax +49 (0) 251 674 999-99  
mail@lancier-monitoring.de  
www.lancier-monitoring.de

### System diagram

#### Rail-Module-Bus

with RM-Basic module for power supply, measurement value display and forwarding with RM-Mx module for the reading of M-Bus nodes.

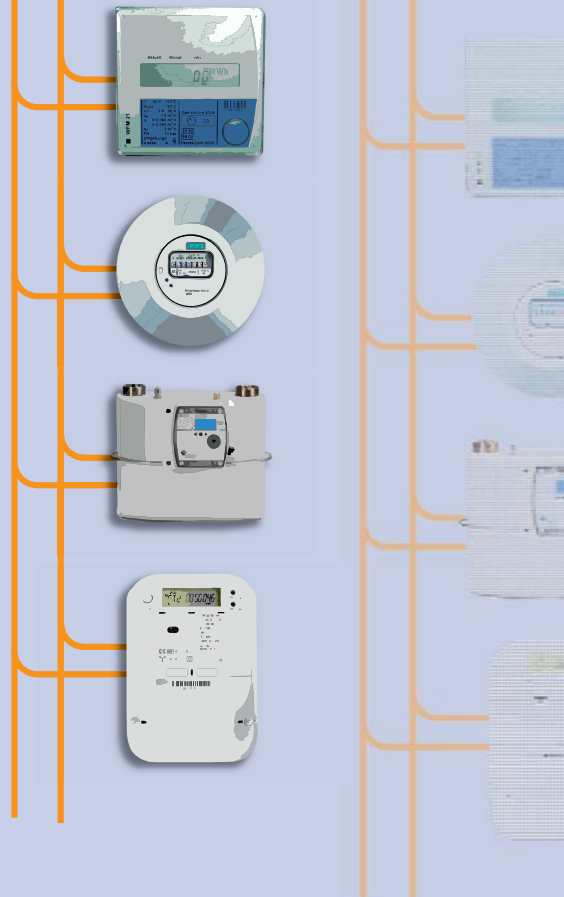


RM-Basic module

RM-Mx module

#### M-bus nodes for meters of e. g.

- heat
- water
- gas
- electric power, etc.



Each RM-Mx module can read  
up to 4 nodes on 1 AM-bus.