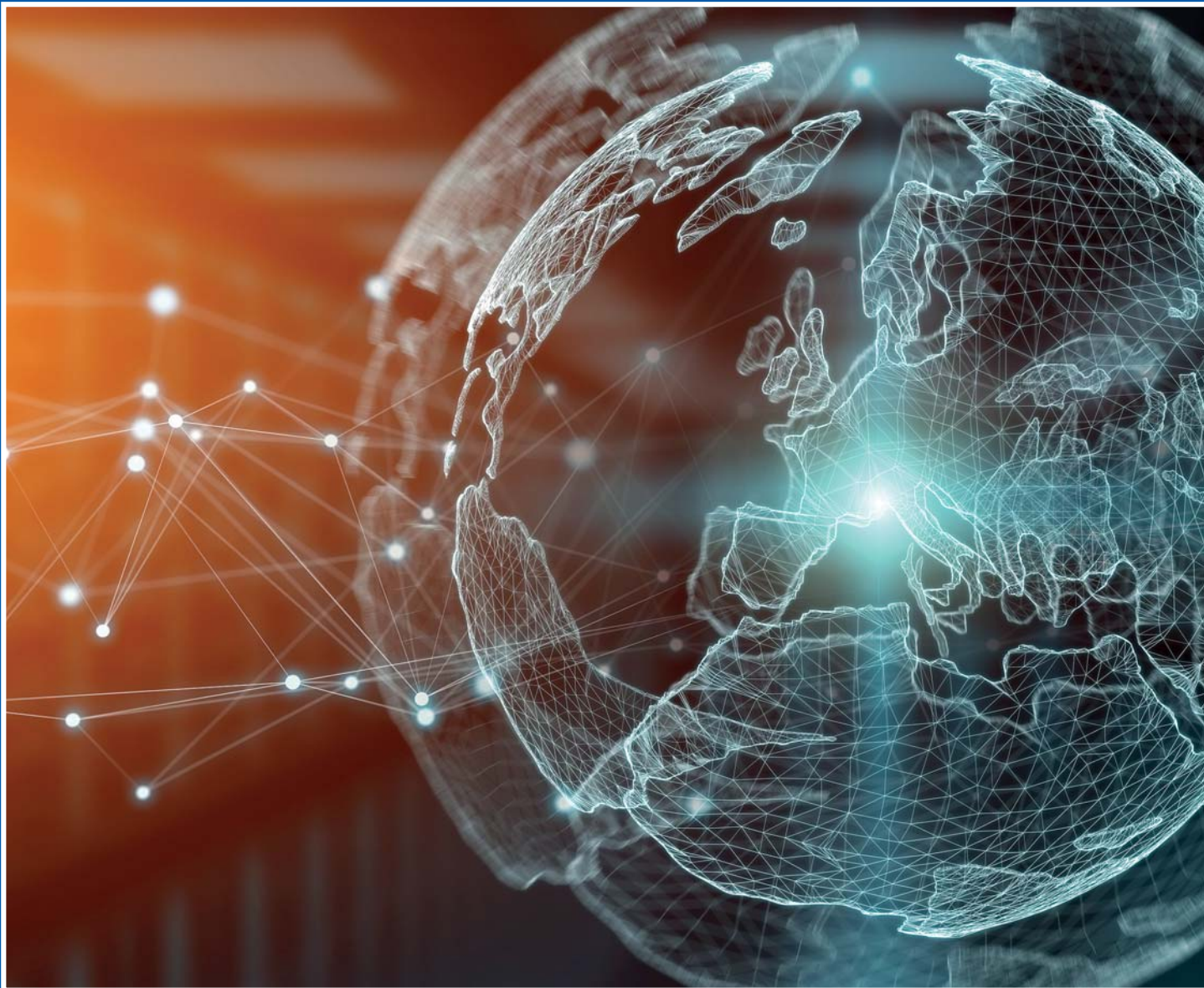


Total Network Transparency with the Unified Monitoring System UMS



*We develop fine solutions:
mutual, innovative, reliable*

Maintain an overview



Unified Monitoring System UMS: Integration instead of stand-alone

Until now many users have considered the monitoring of cable and pipe networks and associated facilities to be isolated tasks.

Modern management systems, however, require the integration of a range of monitoring tasks in order to allow for efficient quality assurance and service control.

The Unified Monitoring System UMS by LANCIER Monitoring offers the integration of all services, flexible reporting as well as an interface to management systems.

In all networks the UMS offers:

- Permanent preventive monitoring
- The ability to react quickly in the event of faults, i.e. no or only short down-times.
- Fault localisation
- One operator platform for all monitoring tasks
- One presentation diagram for all networks
- In addition, the monitoring of physical parameters, e.g. pressure, humidity, temperature etc.
- Signal contacts for other alarms

All networks - one system

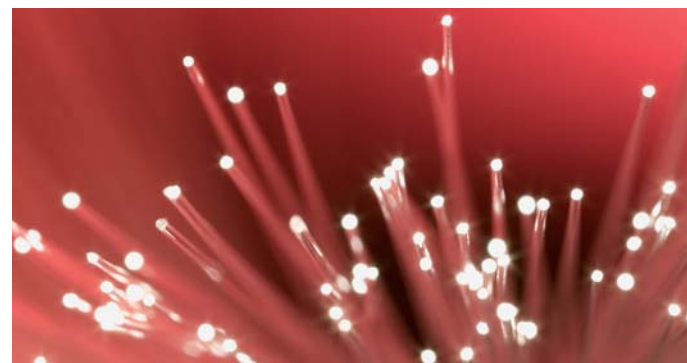
Copper cable monitoring

- Insulation monitoring
- Pressurisation monitoring
- Humidity monitoring inside sleeves



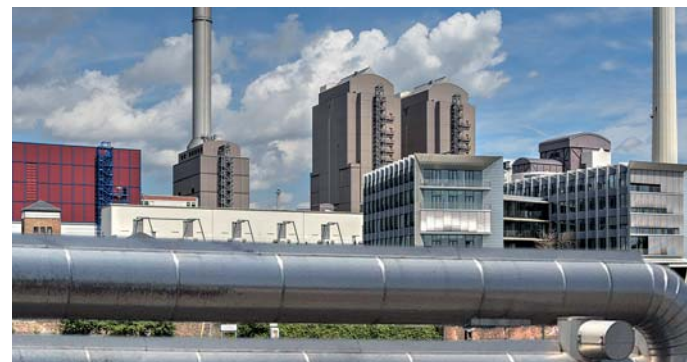
Fiber optic network monitoring

- Monitoring with reflectometers
- Optical power monitoring
- Optical attenuation monitoring



District heating monitoring

- Leakage monitoring
- Leakage localisation
- Pipe and ground connection monitoring



Energy cable monitoring

- Monitoring of optical short-circuit indicators
- Monitoring of electrical short-circuit indicators (e.g. dry contacts)



Manhole cover monitoring

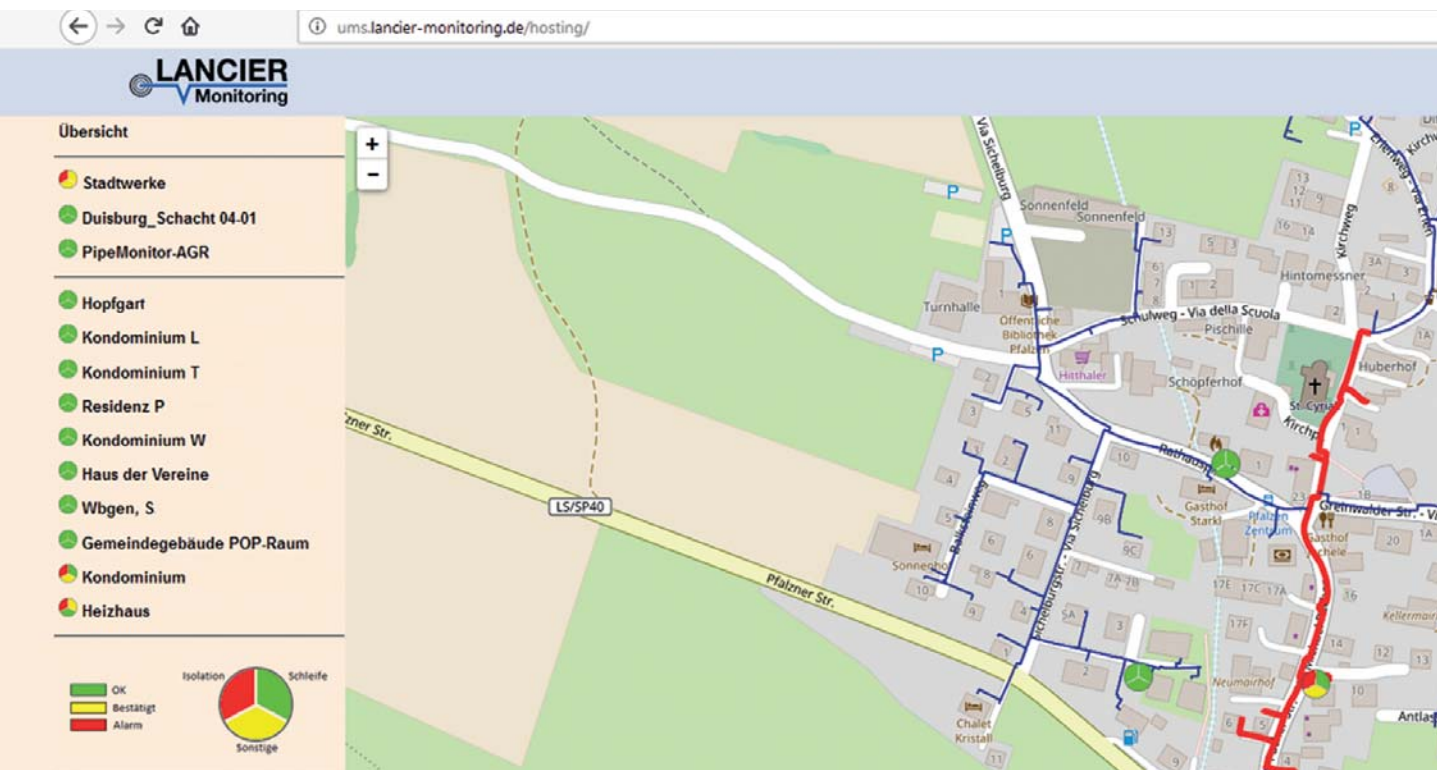
- Manhole cover monitoring
- Monitoring of outdoor housings etc.



Plants and systems monitoring

- Pressurisation systems
- Devices and systems

From an overview down to details



The UMS reveals all important information in a few mouse clicks

On the start screen all monitoring stations and routes are shown and selectable via a mouse click.

Routes in alarm states are shown in red.

See fault locations including GIS coordinates and mapping.

UMS components

- The monitoring stations form a universal platform for all network and system monitoring tasks.
- The server contains the central Oracle™ data base for all monitoring stations and supplies data and information to clients.
- The client/server communication feature uses the Internet protocol and can therefore be accessed via the Internet or Intranet using standard browsers.

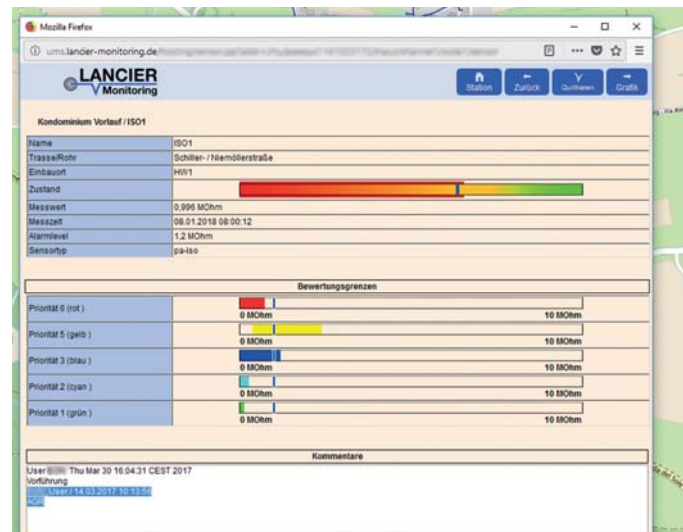
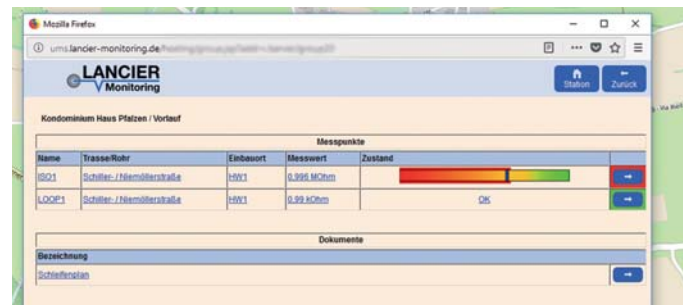
Obtain results intuitively and quickly

Monitoring stations

The monitoring stations record all measurement parameters and evaluate the measurement results according to determined, programmed threshold values.

A central server permanently calls up alarms and status information via the network.

From the start screen you can go directly to the detailed view of any monitoring station and all of its relevant parameters.



Measurement points

By mouse click you can move quickly and easily from any monitoring station to individual measurement points.

Here you will find all the important details relating to the applied sensors along with all of the recorded measurement values.



Graphic evaluation

With just one click you can call up a graphic evaluation for any measurement point, e.g. the measurement values over time.

Automatic alarms

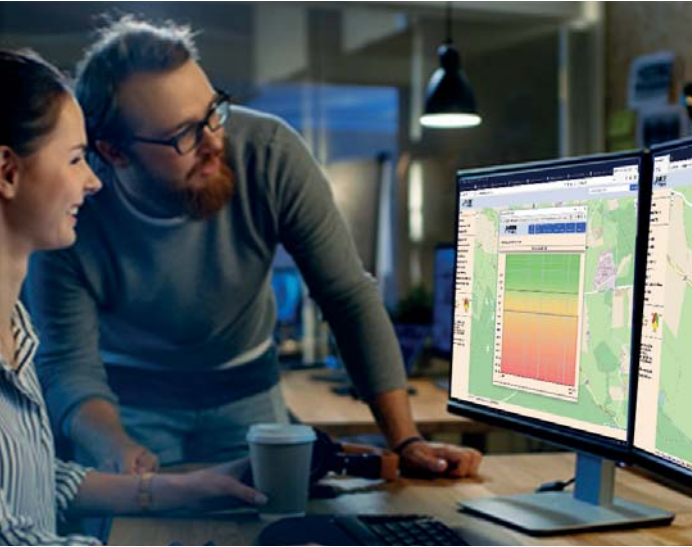
Configure the recipients of particular alarm messages individually, according to their operational requirements and via a range of communication channels, e.g. e-mail or SMS.

Individual customisation

You can store your own plans and documents for quick access and assign them to the relevant routes or particular sections.



Flexible and safe anywhere in the world



Are you worried about security gaps?

The LANCIER UMS and EasyView software is usually installed on computers within the operator's network.

However, many companies prohibit external access to their own servers. The resulting security risks seem too high to them.

Nevertheless, the smooth maintenance and repair of monitoring networks requires that employees and service providers gain direct access to the relevant data.

The solution: The UMS Hosting-Service

LANCIER Monitoring offers a server that retrieves, analyses and supplies measurement data from monitoring points in your systems.

Worldwide and secure

You and your external service providers have password-protected access to the analysed data via the Internet.

The outsourcing of the data management frees up your company server and also offers considerable security advantages.

It's worth it for you

Professional server hosting offers the highest availability at firmly calculable costs and thus keeps you safe from nasty surprises - a worthwhile alternative for large and small companies.



Economic and efficient

Cost reductions

Take advantage of the savings potential the UMS Hosting Service offers. You yourself will have reduced costs, in particular due to the elimination of purchase and maintenance costs for additional hard- and software, as well as optimised scheduling for your technicians.

Optimal overview and control

You will always have a complete overview thanks to the worldwide, password-protected access to the stored data and measurement values with direct control of newly established monitoring points including via mobile access.

Independence

Since no data has to be administered and maintained on your own servers, your internal IT structures remain completely unencumbered.

All relevant data are stored on LANCIER Monitoring servers where they are autonomous, safe and accessible worldwide.

*UMS and hosting service:
The economic and efficient
monitoring solution!*



LANCIER Monitoring GmbH

Gustav-Stresemann-Weg 11
48155 Münster, Germany

Phone +49 (0) 251 674 999-0

Fax +49 (0) 251 674 999-99

mail@lancier-monitoring.de

www.lancier-monitoring.de



We are member of